



*'Making Sense of Care'*

# 2022 PRODUCT RANGE

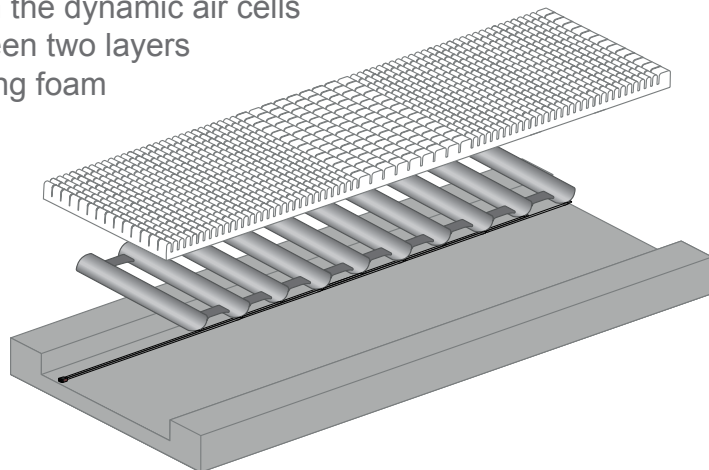


# HYBRID MATTRESS SPECIALIST



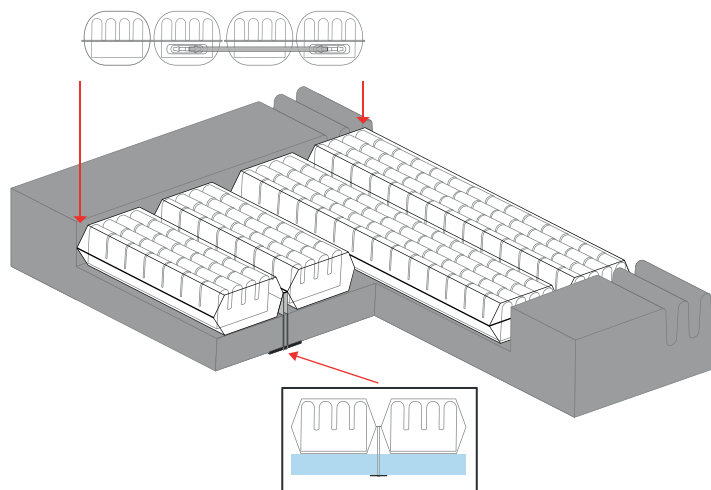
## EMBEDDED HYBRID SYSTEMS

Below is an illustration depicting an embedded hybrid system with the dynamic air cells sandwiched between two layers of pressure relieving foam



## INTEGRATED HYBRID SYSTEMS

Below is an illustration showing how the pressure relieving foam has been enclosed inside the dynamic air cells.



1. Designed and Manufactured in the UK
2. Available in Regular, Bariatric and Junior Sizes  
75-120cm wide
3. Use with 'Very High Risk' Patients
4. Plug and Play Pump Units
5. Maximum Patient Weight of upto 380Kg
6. 5 Year System Warranty\*

MediSmart offers a unique option of both types of dynamic hybrid mattress system, Embedded and Integrated, giving the customer the choice. Both systems combine the benefits of modern foam technology and traditional dynamic air mattresses.

The design is for patients considered to be at 'Very High Risk' of developing a pressure ulcer.

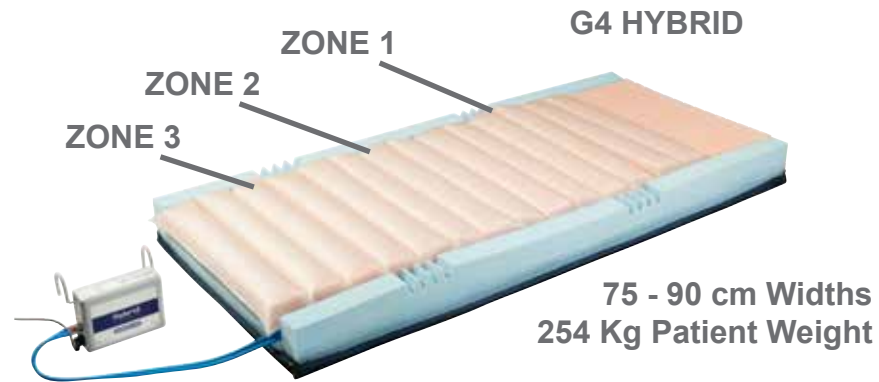
This 'Plug and Play' system is very simple to use and requires minimum basic training to operate. It is also ideal for use in the community.

A combination of the quietest pump on the market and high comfort levels, this system offers a very flexible package with little or no disruption to patient comfort due to the simplicity in setting up in order to meet a particular patient's clinical requirements. This, in turn, significantly reduces decontamination and logistical costs.

The HF-welded 'Dartex' material outer cover stretches in multiple directions, has excellent permeability properties, and a long life while meeting stringent infection control requirements.

\* To qualify for 5 year warranty system must be serviced by MediSmart Technologies Ltd on an annual basis.  
\*\* Technical support throughout the life of the product with options for upgrades are readily available as long as there are no compatibility issues.

**INTEGRATED HYBRID SYSTEMS**



1. Designed and Manufactured in the UK
2. Three Different Pressure Zones
3. Quick Setup. Reaches Pressure in 2 Mins
4. Static or Dynamic Operation

**G4 BARIATRIC HYBRID**

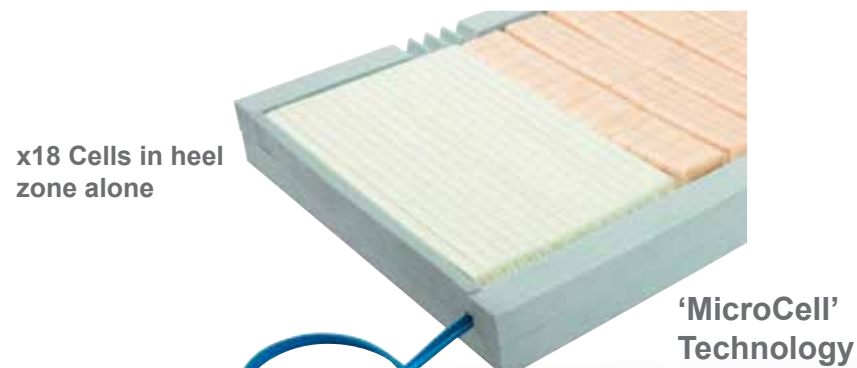


**G4 PUMP UNIT**



1. Designed and Manufactured in the UK
2. 'Plug and Play' Pump Unit
3. 5 Year Extended Warranty \*
4. Near Silent Operation

**G4 Plus Mattress**



1. Extremely low heel pressures
2. 20mm x 20mm MicroCells for heel zone
3. All other features of G4 mattress

**G4 Cushion**

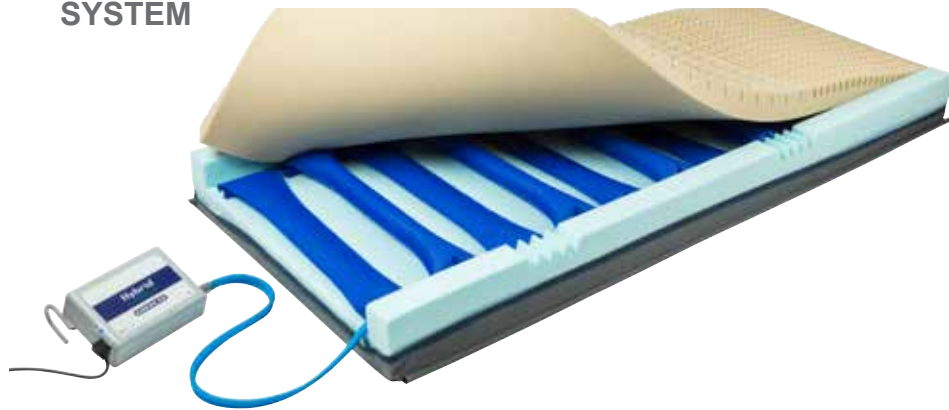
Allows for 24/7 pressure relief



\* To qualify for 5 year warranty system must be serviced by MediSmart Technologies Ltd on an annual basis.

## EMBEDDED HYBRID SYSTEMS

### G1 HYBRID SYSTEM



1. Designed and Manufactured in the UK
2. Offers extreme patient comfort for a dynamic system
3. Use as a static foam or dynamic hybrid mattress
4. Minimal carer training as system has no controls
5. Near Silent Operation

### G2 BARIATRIC HYBRID



120 cm Wide  
350 Kg Patient Weight

### G1 PUMP UNIT



1. Proven reliability over the years
2. 'Plug and Play' Pump Unit
3. Very easy to operate

### G1 Cushion

Allows for 24/7  
pressure relief

Available in several  
sizes to order



**DYNAMIC MATTRESS SYSTEMS**

**DU2 OVERLAY SYSTEM**



1. Designed and Manufactured in the UK
2. x20 PU air cells
3. Easy to use CPR deflation system
4. Full set of system alarms

**DU4 MATTRESS REPLACEMENT SYSTEM**



1. Designed and Manufactured in the UK
2. Very Quiet Operation
3. Microprocessor Controlled System
4. Electronic Pressure Regulation

**DU5 MATTRESS REPLACEMENT SYSTEM**



1. Designed and Manufactured in the UK
2. 200mm Deep Air Cells
3. Fast CPR Deflate
4. Dartex Cover Material
5. x19 TPU/ Nylon Air Cells

**DU5 PUMP SYSTEM**

1. Powerful 12 Lt compressor
2. Full medical approvals
3. Three operating modes:- Dynamic, Static, Care Mode
4. Smart Noise Cancellation for Near Silent Operation
5. Microprocessor



## MediSmart Universal Pump



The MediSmart Universal pump has been designed to operate with the complete range of mattresses offered by MediSmart.

On initial system setup the user selects the mattress system being used and from then on the operational settings are set for that system.

There is the option of running dynamic, Integrated and Embedded hybrids in either CLP (Constant Low Pressure) or Alternating modes.

### Compatible Mattresses

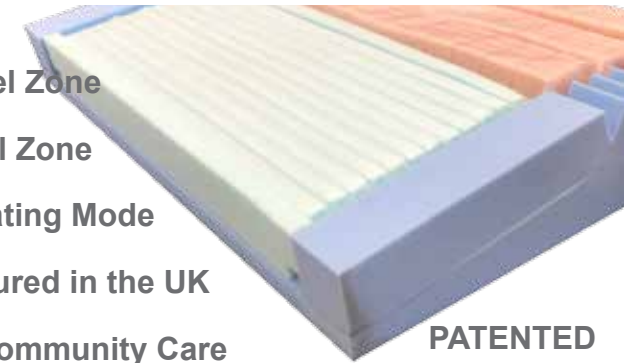
1. MicroCell Hybrid
2. G4 Integrated Hybrid
3. G4 Bariatric Hybrid
4. G2 Embedded Hybrid
5. G2 Bariatric Hybrid
6. DU-2 Overlay
7. DU-4 Mattress Replacement



## MediSmart MicroCell Mattress

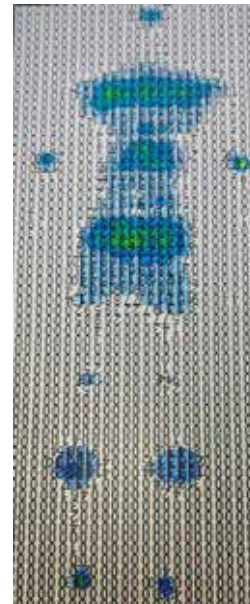


1. Zero Heel Pressure
2. x12 20mm MicroCell Heel Zone
3. Tapered Alternating Heel Zone
4. Static or Dynamic Operating Mode
5. Designed and Manufactured in the UK
6. Ideal for use in ICU or Community Care



**PATENTED  
TECHNOLOGY**

### Gioform G4 Pressure Mapping



The patented MicroCell heel system from MediSmart transforms the way in which very high risk patients can be nursed.

As can be seen from the two pressure maps, the G4 hybrid system clearly has two pressure points for the heels, whereas the MicroCell mattress has zero pressure on the heels and has redistributed the pressure onto the calf area.

Both readings were taken using the same settings with the same patient in a totally flat posture.

### MicroCell Pressure Mapping



The results shown indicate both systems running in alternating mode. When used with the MediSmart Universal pump the system can also run in CLP mode to ensure a level nursing surface without any pump noise.

# MediSmart Strata Mattresses



The MediSmart Strata mattress range has been designed to offer optimum patient comfort while delivering alternating pressure relief at the same time.

The supreme comfort is delivered via a multi-layered construction using varying grades of foam and air cells.

## STRATA ULTRUS

1. Hybrid construction offers Static or Dynamic modes
2. 30 mm Visco Foam top layer for supreme comfort
3. Tapered Alternating Heel Zone
4. Dartex vapour permeable top cover
5. Designed and Manufactured in the UK



## STRATA OPULUS

1. Designed to offer ultimate comfort.
2. 50mm Visco Foam top layer
3. Tapered 80mm Visco Heel Zone
4. Dartex vapour permeable top cover
5. Designed and Manufactured in the UK
6. Ideal for use in Palliative



# MediSmart Intercross Mattresses



The MediSmart Intercross Mattress range has been designed to combine both alternating pressure relief and the mattress turning function.

In order to offer good value for money and system reliability, a multifunctional

Universal pump comes as standard and is utilised for cycle time and air pressure. An integrated mode selection valve on the side of each mattress is used to control the function of both the turning and alternating modes.

## INTERCROSS ALTRIX

1. Hybrid construction offers Static or Dynamic modes
2. x14 hybrid air cells patient surface
3. 180mm Deep supporting side walls
4. Dartex vapour permeable top cover
5. Designed and Manufactured in the UK
6. Ideal for Palliative or Community Care



## INTERCROSS FLEXUS

1. Dynamic 'full air cell' Mattress replacement
2. x16 PU film air cells
3. 180mm Deep supporting side walls
4. Dartex vapour permeable top cover
5. Designed and Manufactured in the UK
6. Ideal for use in Palliative



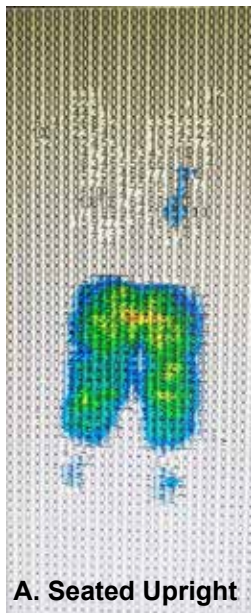


# MediSmart Companion

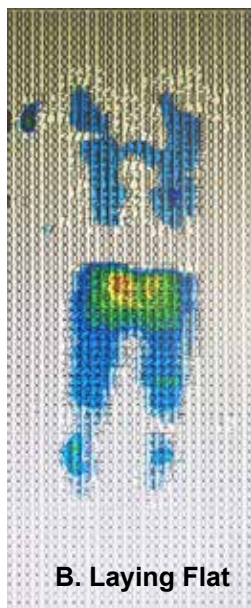
## Ultra Low Profile Cushion



### Standard Recliner Pressure Mapping



A. Seated Upright



B. Laying Flat

The pressure mapping taken using the chair and MicroCell overlay shown in the photos on the next page prove without a doubt the clinical effectiveness of the dynamic overlay when used on a standard rise / recline nursing chair.

On the left hand side (A,B) is mapping for the chair as supplied without any special measures.

On the right hand side (C,D) is the chair with the MediSmart Dynamic Recliner Overlay installed.

The top images (A,C) are of the chair in an upright position whilst the lower images ( B,D) are of the chair laid flat.

With the addition of the Companion Cushion the pressure has been redistributed accordingly to ensure effective pressure relief.

### Companion Fitted Pressure Mapping



C. Seated Upright



D. Laying Flat



“By using this [Companion Ultra Low Profile Cushion] we have probably saved the NHS a cost of an admission and the emotional stress to the user and family.” —Senior O.T. in the South West (data available on file).

Ultra thin profile air cell design (25mm x 20mm) means that the patient's/service user's position provides comfort.

The air cell bank is fitted into a fully welded Dartex cover which is both water proof and vapour permeable.

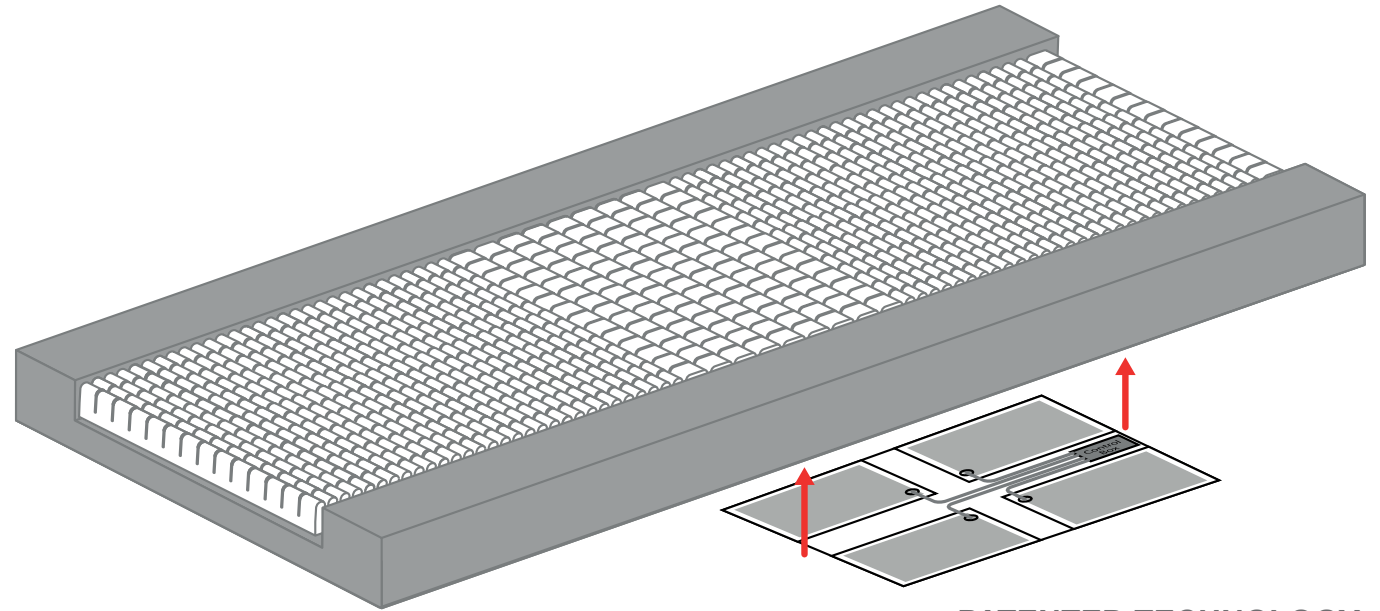
The adjustable straps allow easy fitting to most existing rise/recliner chairs.



# SMART PATIENT SENSING



## PATIENT MOVEMENT MONITOR



### PATENTED TECHNOLOGY

MediSmart Technologies first venture into smart tech is this revolutionary patient movement monitor.

The Patented design is made to retro fit onto any existing foam or hybrid mattress system. Easy to install the sensor pad is attached to the bed frame and covers the upper and lower torso areas.

Once activated the system uses a simple traffic light display to show nursing staff the level of patient movement and whether or not they require repositioning or not.

This simple system both saves nursing time and improves patient comfort by not constantly having to disturb them.

- 1. Designed and Manufactured in the UK**
- 2. Fits to ALL foam mattresses**
- 3. Use with Patients deemed to be at risk**
- 4. Minimal nurse training required**
- 5. Easy to read Traffic Light display**
- 6. Low cost universal system**
- 7. Saves nurses time**
- 8. Removes guess work about a patient**

# TECHNICAL SPECIFICATIONS

## Generic Pump Specifications

Serial Number.....As per label on rear of pump  
Electrical Supply.....220 – 240 volt, 50 Hz  
Power Consumption.....10 watts  
Fuses.....TA1H 250V  
Protection against shock.....Class 2  
Noise Level.....Approx. 25 dB  
Tycle Type.....1 in 2  
Dimensions.....265 x 175 x 90 mm  
Weight.....1.6 kg  
Service Interval.....12 months / 8760 hours  
Expected life.....5 years  
Shelf life of parts.....5 years

Hybrid G1	Cycle Time 10min	Pressure Level 60mmHg
Hybrid G3	Cycle Time 10min	Pressure Level 28mmHg
Hybrid G4	Cycle Time 12min	Pressure Level 18mmHg + 28mmHg
Hybrid G4 Bari	Cycle Time 12min	Pressure Level 30mmHg + 40mmHg
MS Universal	Cycle Time 10min	Pressure Level Variable 10-60mmHg

## Generic Mattress Specifications

Serial Number.....Label on air tube of mattress  
Pillow Section.....Static Pressure Relief Foam  
Foam 'U' Core......75mm  
Dimensions.....1990 x 900 x 150mm (Nominal)  
Top Cover Material.....Dartex Performance 406  
Expected life of Mattress Cells.....5 years  
Shelf life of Mattress parts.....5 years

### Hybrid G1 + G2 Mattresses

Number of Air Cells.....10 Air Cells  
Mattress Weight.....14kg  
Air Cell Material.....PU/ Nylon Fabric  
Patient Weight .....No Pump 159Kg      With Pump 250Kg  
Patient Risk Level..... No Pump High      With Pump Very High

### Hybrid G3 + G4 Mattresses

Number of Air Cells.....14 Air Cells  
Mattress Weight.....14kg  
Air Cell Material.....250um PU Film  
Patient Weight .....No Pump 159Kg      With Pump 250Kg  
Patient Risk Level.....No Pump High      With Pump Very High

### MediSmart Microcell Mattress

Number of Air Cells.....10 Air Cells  
Tapered Foot MicroCell Section.....12 Air Cells  
Mattress Weight.....14kg  
Air Cell Material.....250um PU Film  
Patient Weight .....No Pump 159Kg      With Pump 250Kg  
Patient Risk Level.....No Pump High      With Pump Very High

### Hybrid G4 Bariatric Mattress

Number of Air Cells.....14 Air Cells  
Mattress Weight.....21kg  
Air Cell Material.....300um PU Film  
Patient Weight .....No Pump 270Kg      With Pump 380Kg  
Patient Risk Level.....No Pump High      With Pump Very High

310-312 Dallow Road  
Luton,  
Bedfordshire  
LU1 1TD  
England

W. [www.medismart.co.uk](http://www.medismart.co.uk)  
E. [sales@medismart.co.uk](mailto:sales@medismart.co.uk)  
T. +44 (0)1582 344 974

Eurolink Europe  
Compliance Ltd.  
Dublin, DO2 AY86,  
Ireland.